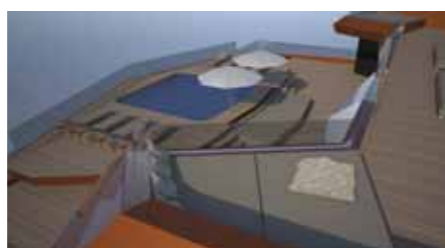


# 52m cat EVA



“The world is beautiful, why not let it in?”



## About Misha Merzliakov:

A product of the Australian Maritime college, Misha is one of the 2011 young designer of the year finalists. A naval architect and designer, his submission was a 52m catamaran motoryacht Eva.

[www.mishamerzliakov.com](http://www.mishamerzliakov.com)

## The Yacht

Eva has a sumptuous mix of glass and Dutch art movement inspired exterior. The interior draws the eye, via a seemingly boundary-less mix of glass and structure, to the yacht's surroundings. All of which enhance the experience of the sea.

The design utilises an innovative bow door for vehicle and tender storage. Inside an Audi Q7 is stowed and can be

driven off via the bow ramp onto a dock or pier.

Eva is designed to be of aluminium construction, which essentially translates into a low draft and fuel-efficient yacht.

Principle living areas and owners cabin have a stern facing aspect with the focal point being the elevated pool area. This enables a cohesive blend of interest and drama towards the recreational outdoor spaces and the environment.

“I wanted to push the boundaries of catamaran design both in arrangement and exterior.”

## Accommodation Details

One owner's cabin, three guest double cabins, one children's twin cabin, one child's double cabin.

The yacht has a variety of areas of differing interest.

- Lower deck houses two beach clubs,

wake boarding boat, three jet skis, scuba facilities and sunning areas.

- Main deck has a main saloon, indoor and outdoors dining, Sunken playpen/dance floor; Cinema, pool area, internal and external sun lounges. Forward sits the vessels seven metre tender and the Audi Q7 4WD.
- Upper deck is where the guest accommodation is located. There is also the owner's lounge, additional

saloon and a console games room ... conveniently located near the children's cabin. More lounges on the aft deck. Also, two more sun lounges that provide an amphitheater like viewpoint.

- Bridge deck. Apart from the bridge, the space is dedicated to the owner: 100m<sup>2</sup> of cabin space and a generous 67m<sup>2</sup> of private deck space. The owner will enjoy 180° vista from the master cabin.